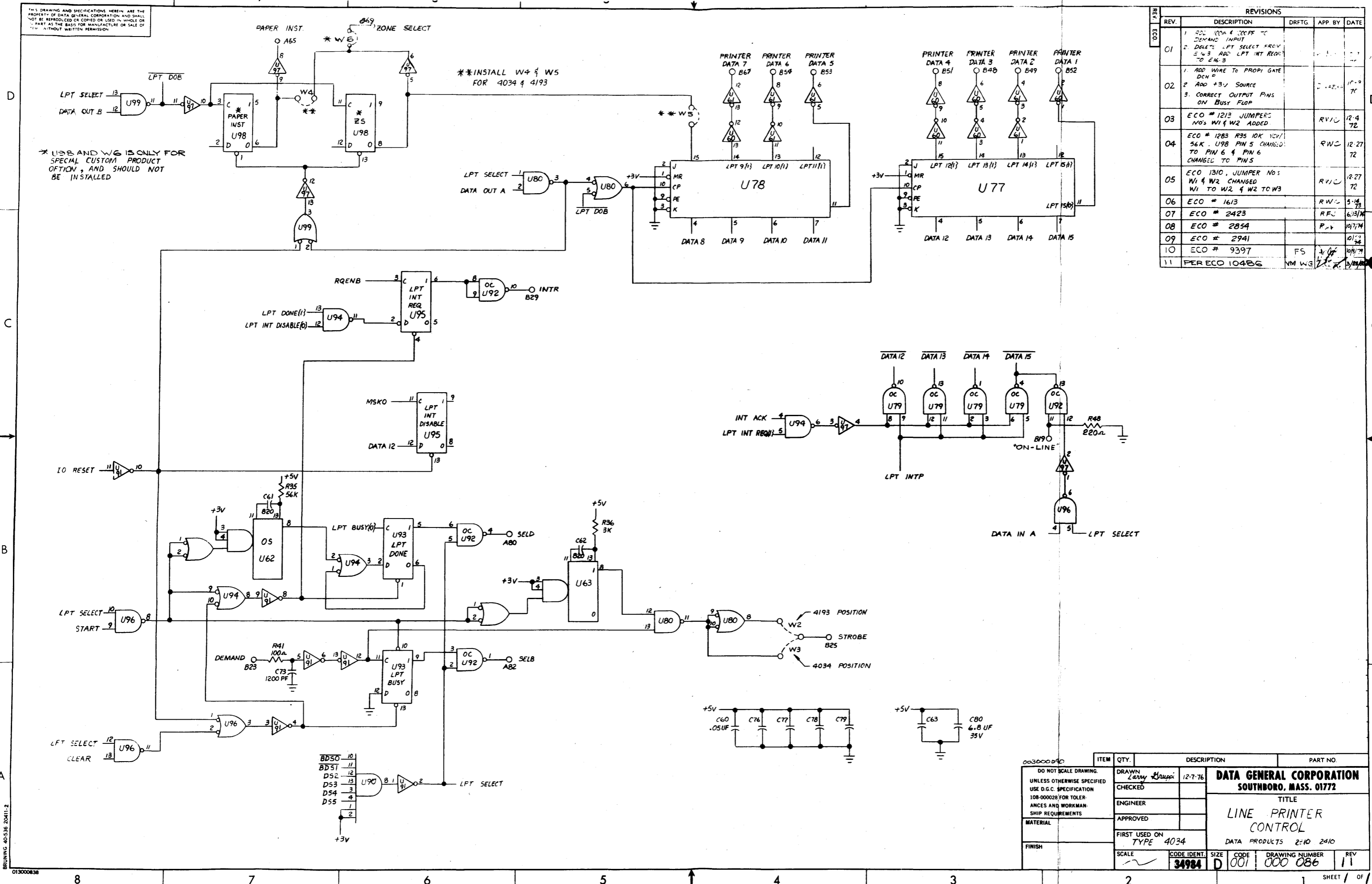


THIS DRAWING AND SPECIFICATIONS HEREIN ARE THE PROPERTY OF DATA GENERAL CORPORATION AND SHALL NOT BE REPRODUCED OR COPIED OR USED IN WHOLE OR IN PART AS THE BASIS FOR MANUFACTURE OR SALE OF ANY PRODUCT WITHOUT WRITTEN PERMISSION.



REVISIONS				
REV.	DESCRIPTION	DRFTG	APP BY	DATE
01	1. ADD 100K & 100PF TO DEMAND INPUT 2. DELETE LPT SELECT FROM 5 & 3 ADD LPT INT REQ TO 5 & 3			
02	1. ADD WIRE TO PROPRI GATE DCH P 2. ADD +3V SOURCE 3. CORRECT OUTPUT PINS ON BUSY FLOP			
03	ECO # 1213 JUMPERS NO. 1 & 2 ADDED		RVC	12-4-72
04	ECO # 1283 R35 10K VCH 56K. U98 PIN 5 CHANGED TO PIN 6 & PIN 6 CHANGED TO PIN 5		RWC	12-27-72
05	ECO 1310, JUMPER NO. 5 W1 & W2 CHANGED W1 TO W2 & W2 TO W3		RVC	12-27-72
06	ECO # 1613		RWC	5-14-73
07	ECO # 2423		RFJ	6-13-74
08	ECO # 2854		R.V.	10-7-74
09	ECO # 2941			10-1-74
10	ECO # 9397		FS	10-15-74
11	PER ECO 10486		NM WG	3-11-75

ITEM	QTY.	DESCRIPTION	PART NO.
DO NOT SCALE DRAWING.			
UNLESS OTHERWISE SPECIFIED USE D.G.C. SPECIFICATION			
108-00028 FOR TOLERANCES AND WORKMANSHIP REQUIREMENTS			
DRAWN		Larry Kruppi	12-7-76
CHECKED			
ENGINEER			
APPROVED			
FIRST USED ON		TYPE 4034	
FINISH			
SCALE		CODE IDENT.	SIZE
		34984	D
		CODE	001
		DRAWING NUMBER	000 086
		REV	11

BRUNING 40-536 20411-2
013000838