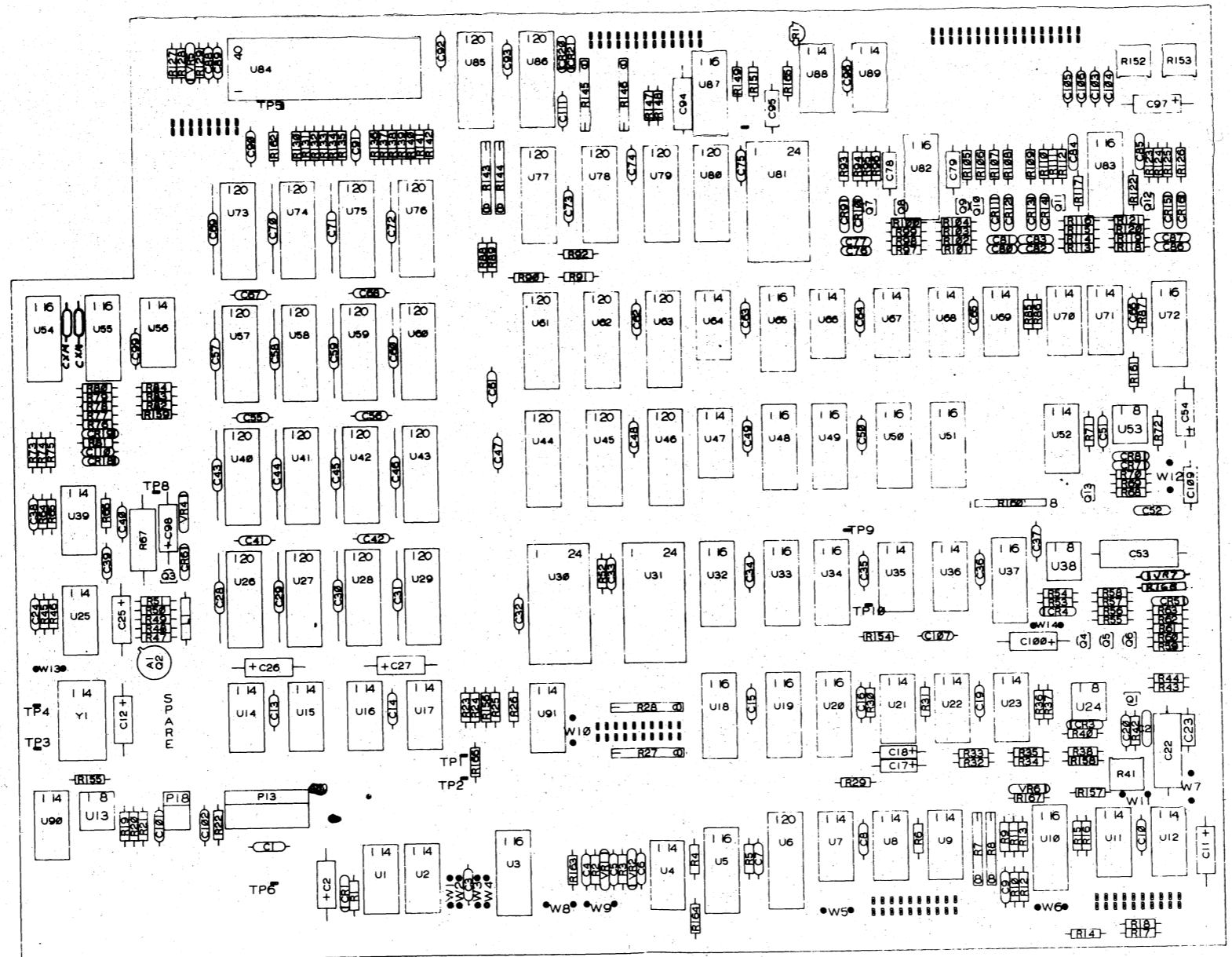


| REVISIONS | | | | |
|-----------|---------------|-------|--------|----------|
| REV | DESCRIPTION | DRFTG | APP BY | DATE |
| 07 | per eco D347 | PDM | | 9-7-78 |
| 08 | PER ECO E452 | WLB | GM | 10-26-78 |
| 09 | PER ECO E455 | RB | GM | 11-3-78 |
| 10 | PER ECO E459 | RB | GM | 11-3-78 |
| 11 | PER ECO 8522A | WLB | GM | 12-20-78 |
| 12 | PER ECO 8553 | WLB | GM | 12-27-78 |



00300089706
LAYER 6

THIS DRAWING AND SPECIFICATIONS HEREIN ARE THE PROPERTY OF DATA GENERAL CORPORATION AND SHALL NOT BE REPRODUCED OR COPIED OR USED IN WHOLE OR IN PART AS THE BASIS FOR MANUFACTURE OR SALE OF ITEMS WITHOUT WRITTEN PERMISSION

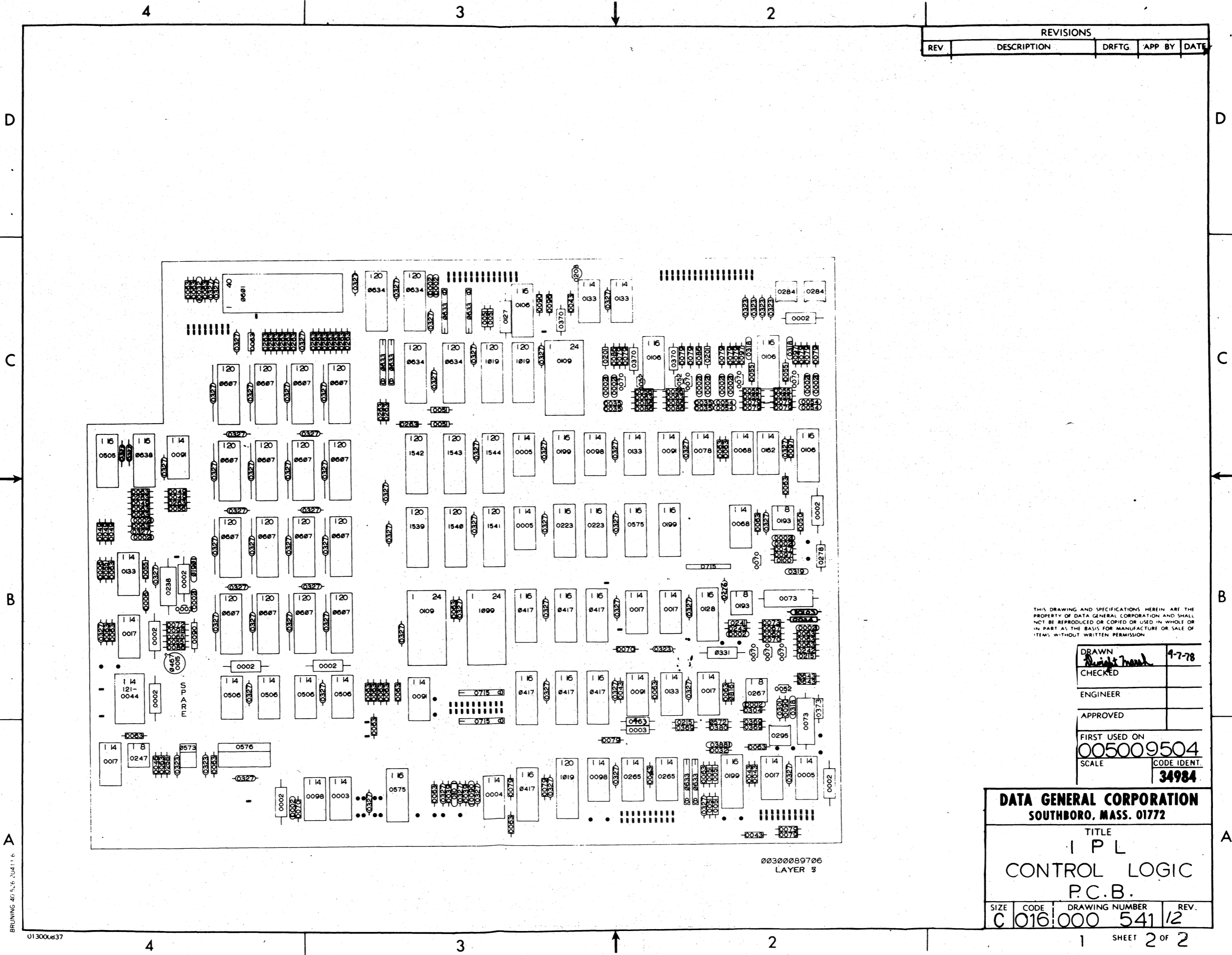
003000897-14
107000897-02

| | | |
|---------------|---------------------|--------|
| DRAWN | <i>Dwight Marsh</i> | 9-7-78 |
| CHECKED | | |
| ENGINEER | | |
| APPROVED | | |
| FIRST USED ON | | |
| SCALE | 005009504 | |
| CODE IDENT. | 34984 | |

| | | | |
|--|------|----------------|------|
| DATA GENERAL CORPORATION SOUTHBORO, MASS. 01772 | | | |
| TITLE I P L CONTROL LOGIC P.C.B. | | | |
| SIZE | CODE | DRAWING NUMBER | REV. |
| C 016 | 000 | 541 | 12 |

1 SHEET 1 OF 2

BRUNING & SONS, INC. 01300-0837



| REVISIONS | | | | |
|-----------|-------------|-------|--------|------|
| REV | DESCRIPTION | DRFTG | APP BY | DATE |
| | | | | |

THIS DRAWING AND SPECIFICATIONS HEREIN ARE THE PROPERTY OF DATA GENERAL CORPORATION AND SHALL NOT BE REPRODUCED OR COPIED OR USED IN WHOLE OR IN PART AS THE BASIS FOR MANUFACTURE OR SALE OF ITEMS WITHOUT WRITTEN PERMISSION.

| | |
|-------------------------------|-------------|
| DRAWN <i>Robert H. ...</i> | 4-7-78 |
| CHECKED | |
| ENGINEER | |
| APPROVED | |
| FIRST USED ON | |
| 005009504 | |
| SCALE | CODE IDENT. |
| | 34984 |

| | | | |
|--|------|----------------|------|
| DATA GENERAL CORPORATION SOUTHBORO, MASS. 01772 | | | |
| TITLE I P L CONTROL LOGIC P.C.B. | | | |
| SIZE | CODE | DRAWING NUMBER | REV. |
| C | 016 | 000 541 | 12 |

00300089706
LAYER 5

BRUNING 40, 5, 6, 20411, 6
013000837